

Occupational health and safety

Mitsui Kinzoku Group holds that occupational health and safety is essential for business continuity.

We provide a safe worksite environment not only for our employees but also for cooperative companies, contractors, and visitors to plants.



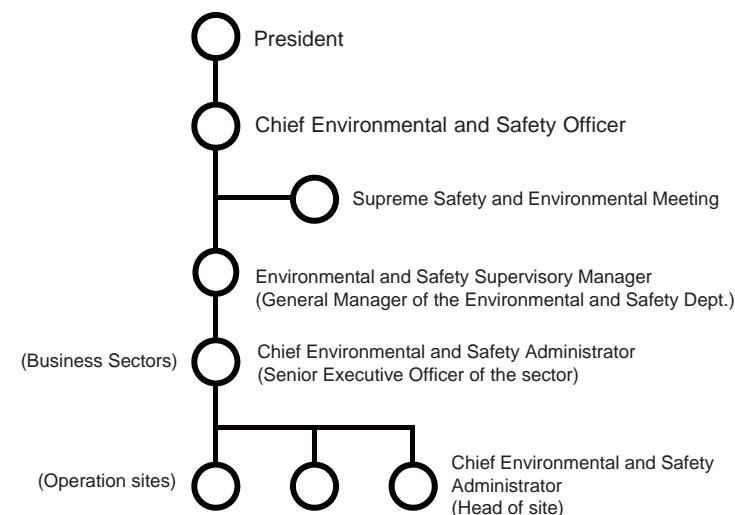
Policies related to health and safety

Being a manufacturing company, we are aware of the importance of managing the health and safety of the workplace. Mitsui Kinzoku Group is committed to creating a safe and comfortable work environment. This is based on our Basic Policy on Health and Safety, in which it states that “ensuring the health and safety of all people working for Mitsui Kinzoku Group is the most important element for conducting business activities.” We also believe that by cultivating a corporate culture that places safety first, we will be able to prevent occupational hazards, improve productivity, and reduce operational and business risks.

Health and safety management system

Mitsui Kinzoku Group adopted the occupational health and safety management system, OHSAS 18001, for major sites. Currently, we are working to sequentially change this to ISO 45001 certification.

Environmental and Safety Management System



For small-sized sites, we developed an internal certification system. At each site we work to realize an upward spiral motion by going through the PDCA cycle in accordance with the management system, which is implemented in effective activities, such as risk assessments as well as training programs for health and safety.

We implement internal safety audits both in Japan and overseas in order to confirm the operational situation of the management system at the manufacturing site. The internal safety auditing body checks for compliance with laws and regulations, such as regarding the notifications, inspections, and measurements, in addition to pointing out hazardous places and following up on improvements made.

Health and safety training

Each production site improves the safety awareness of their employees by conducting KY (“Kiken Yochi” meaning “hazard prediction”) activities before starting operations, and giving experiential risk training by experienced employees. Furthermore, each workplace conducts “close-call activities,” and has the workers and supervisors communicate with one another on safety issues. We train employees on the protective equipment that needs to be used for each work activity, and also conduct training in preparation for emergency situations, such as earthquakes. In addition, each site trains those in managerial and supervisory roles about related laws such as on occupational health and safety, thereby ensuring that safety compliance activities are implemented in a thorough manner.



Experiential education (dangers of operating a forklift)

Topics on health and safety: Establishment of the lockout standard

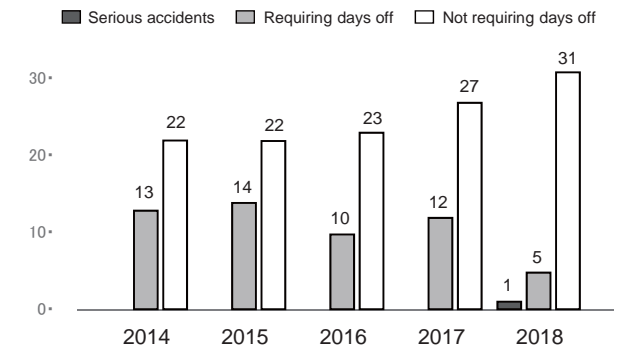
Every year, Mitsui Kinzoku Group defines the “President’s policy on important health and safety issues” that raise key initiatives for the following year based on the year’s safety performance results. The President’s policy for 2019 gives priority to preventative management. Also, a new lockout standard was established as one of the actions to achieve this.

A lockout system is a safety system that keeps the equipment in a state of shutdown (shutting off power) by applying the locks. This system is used to prevent labor hazards that could occur when work is being performed while the equipment is stopped, by preventing a third person from accidentally restarting the equipment and causing such occupational hazards as being caught in between, being drawn into, being electrocuted by the machine, or getting in contact with toxic substances. This standard requires all workers to manage and apply the locks. Furthermore, in order to achieve the reliable use of this system, the standard requires all persons who work on equipment that uses the lockout system (responsible person, workers, consigned workers, etc.) to attend a lecture about the details of the system.

Safety performance in 2018

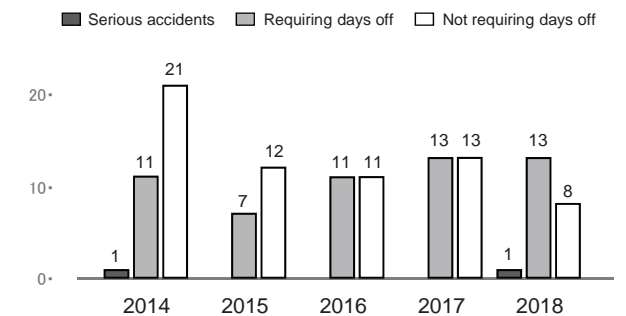
Trends in the number of accidents in sites in Japan

※ Including accidents that occurred in cooperative companies and contractors



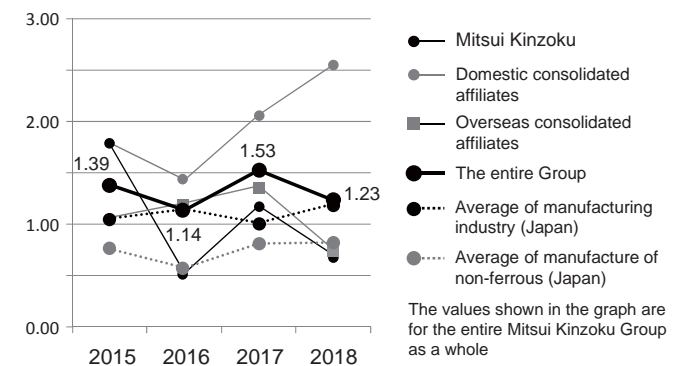
Trends in the number of accidents in overseas sites

※ Including accidents that occurred in cooperative companies and contractors



Frequency rate of accidents

※ Not including accidents that occurred in cooperative companies and contractors



Severity rate of accidents

※ Not including accidents that occurred in cooperative companies and contractors

